

# HL-S5686W

56" Widescreen DLP® HDTV with 720p Resolution



Shown with optional stand (TR50X3B)

Featuring a thin bezel design that “fits where others won’t™”, Samsung’s 56" Widescreen DLP® TV delivers an astounding HDTV experience. Samsung, the recognized leader in DLP technology, created the breakthrough Cinema Smooth™ light engine that produces razor-sharp pictures in 720p. The natural, vivid colors of Samsung’s HL-S5686W are achieved through our advanced Brilliant Color™ technology with a faster color wheel. A contrast ratio of up to 2500:1 captures blacker blacks and crisper whites. And the ultra-fast DLP chip results in the fastest video performance of any HDTV. Best yet, Samsung’s superior technology ensures no image burn-in for a reliable, long-lasting picture.

## TV/Video

- DLP® TV by Samsung
- Thin bezel (.9"), depth (16.3") design—fits where others won’t™
- Built-in analog/digital tuner (NTSC/ATSC)
- Samsung Cinema Smooth™ 720p light engine
  - Single panel digital micro-mirror device (DMD) design for a crystal clear picture without any possibility of convergence errors
  - Up to 2500:1 contrast ratio with outstanding colors and deep black levels
  - Whisper-quiet operation
- Brilliant Color™ provides brightness increase in non-primary colors and boosts overall color intensity
- 1280 x 720 digital format converter for all inputs
- Samsung DNIe™ video enhancement
- Samsung’s Cinema Smooth™ film-mode 3:2 pull down
- No burn-in or uneven screen aging
- New Photo Viewer Interface (with USB 1.1)
- Game mode

## Audio

- Audio wattage – 10W x 2 output
- SRS® TruSurround XT™ sound

## Connections

- 2 HDMI inputs (High Definition Multimedia Interface)
- 2-component video inputs (480i/480p/720p/1080i)
- 3 (2 rear/1 side) A/V composite inputs and 2 S-video inputs
- USB 1.1
- PC (RGB) input



All features, specifications, and model numbers subject to change.  
All on screen images are simulated pictures.  
DLP® and Brilliant Color™ are trademarks of Texas Instruments.

# DLP® tv

## HL-S5686W 56" Widescreen DLP® HDTV with 720p Resolution

### Integrated HDTV Tuner

with the addition of a suitable UHF/VHF antenna delivers the world of free off-air DTV and HDTV local broadcast channels.

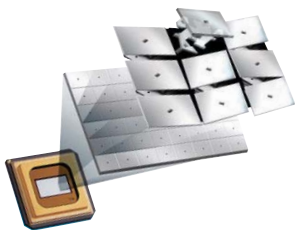
### Cinema Smooth™ Light Engine

Samsung is the worldwide leader in creating light engines that harness DLP HDTV technology from Texas Instruments. Samsung's Cinema Smooth light engine brings together the right optics, electronic circuitry and replaceable light source to create a brilliant picture that's more lifelike and much closer to film. Now in its fifth year of evolution, Samsung's Cinema Smooth light engine delivers crisp, 720p High Definition resolution with high contrast and brightness, defined edges and sharp detail.



### Cinema Smooth 720p Light Engine

Samsung's Cinema Smooth 720p light engine is the culmination of years of industry-leading research and development. It releases the maximum power of the new generation of DMD microdisplays for the most film-like picture. It creates an image with no visible pixel structure and accurate shading and better low-light detail.



### Next Generation DLP Chips from Texas Instruments

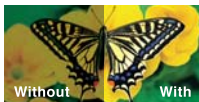
Samsung employs a Texas Instruments DLP chip that is comprised of millions of microscopic mirrors. The DLP chip is faster than any HDTV technology, with the mirrors capable of switching on & off at 15,000 or more times a second to deliver a razor-sharp picture for fast moving images. When combined with Samsung's new Cinema Smooth light engine, the result is a crisp, bright picture with deep, rich colors that's closer to film.



### Faster Color Wheel

Samsung's 2.2" color wheel spins at 14,400 rpm for smooth fast-motion video, and has five color segments for more accurate colors. Comprised of the 3 primary colors, Red, Green and Blue plus Cyan and Magenta. It achieves film-like transitions and eliminates the pixel breakup found in slower color wheel designs and slower-switching LCD microdisplays. The Cinema Smooth™ light engine uses a whisper quiet air bearing design.

**DNle™**



### Samsung's DNle™ – Digital Natural Image Engine

Samsung's exclusive Digital Natural Image engine makes the sharpest and clearest images possible, regardless of the profile of input signals. Five image processors and a six-times density enhancer ensure the best picture from any source. Now in its fourth generation, DNle guarantees the truest colors and highest contrast, while virtually eliminating digital artifacts.



### My Color Control

You can get the pink tones, the green of the grass and the blue of the sky just the way you like, without affecting the other colors on the screen. The three primary colors can be adjusted to perfectly fit your taste. Self expression meets display perfection.

# HL-S5686W

## Cinema Mode

Samsung's Cinema Mode lets you see colors the way the director intended, by matching them more closely to production standards. This creates more accurate colors and natural skin tones when viewing Hollywood movies on your TV—the perfect setting when enjoying movies with the lights off.



Interlaced



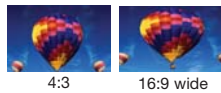
Progressive Cinema



Progressive

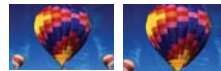
## Cinema Smooth™ Film Mode 3:2 Pull Down

Powered by Samsung's Cinema Smooth technology, 3:2 Pull Down corrects for the artificial frames created when films are converted to DVDs. The result is a clearer image without the subtle motion artifacts caused by 24-to-30 frames per second video conversion.



4:3

16:9 wide



Zoom 1

Zoom 2

## Picture Format Size Adjustment

Enjoy all your 4:3 aspect-ratio programming in smooth, wide-screen without black bars. Four pre-set aspect ratio modes—Normal, Wide, Zoom 1 and Zoom 2—stretch your image to fill the screen naturally.

## Color Temperature Adjustments

Cool1, Cool2, Normal, Warm1, Warm2 selectable with on-screen display.

## 3D Comb Filter

dramatically reduces edge image artifacts while improving transition detail.

## Previous Channel

returns to the previously viewed channel at the push of a button.

## Game Mode

enhances dark areas, sharpens the picture, speeds up the image processing response and enhances the sounds of your games. Picture and sound quality optimized for the special needs of gaming systems at the touch of a button.

## V-Chip<sup>1</sup>

enables parental control for channel and program blocking of TV programs that incorporate the rating code signal.

## Clock with On/Off Timer

Closed Caption displays dialog that can be read along with encoded broadcast TV programs and pre-recorded videos.

## Non Volatile Memory

preserves audio, video and menu settings during power outages.

## Auto Volume Leveler

keeps audio volume consistent during channel changing to minimize static sound bursts.

## Discrete IR Codes

This set is equipped with discrete IR codes for use with an optional macro/programmable remote (see owners manual for details).

## Universal Remote Control

permits control of the TV, DVD, VCR and a Tuner/Receiver.



## HDMI (High-Definition Multimedia Interface)

addresses both pure digital audio and video performance and simplifies connections from the new generation set-top boxes and DVD players by reducing cable connections to one cable and plug.



## DTV and DVD Compatible Connect

your DVD and DTV sources with two smart component video (Y/Pb/Pr) inputs that accept 480p/720p/1080i signals.



## PC

A Samsung HDTV using DLP technology can also function as a high-quality XGA PC monitor.

# HL-S5686W

56" Widescreen DLP® HDTV with 720p Resolution

## Specifications

### VIDEO

**Display device:** Single digital micro mirror device

**Pixel count:** 1280 horizontal x 720 vertical

**Color wheel:** 55 mm/5 segment

**Resolution:** 720p

**Contrast ratio:** 2500:1

**Channel coverage:** VHF 2-13, UHF 14-69, CATV 1-125 (up to 181 pre-selected channels), ATSC 1-69

### AUDIO

**Output power:** 10Wx2

**Speakers:** 2

**Sound mode:** 5 modes

**MTS stereo**

## Connections

### ANALOG VIDEO

**RF in:** 1 rear

**AV in:** 2 rear/1 side

**S-Video input:** 2 rear

**Monitor & sound out:** 1 rear

**Component video input (Y/Pb/Pr):** 2 rear

**PC (RGB) input:** 1 rear

**PC audio input:** 1 rear

**USB:** 1 side

**Digital sound out (optical)**

**HDMI:** 2 rear (digital audio & video)

## Quality

**Warranty:** 1 year parts and labor warranty, including lamp, with in-home service backed by Samsung toll-free support. 1-800-SAMSUNG

## Accessories

**Remote control**

**User manual**

## Net dimensions and weight (WxHxD)

**TV:** 50.9" x 35.7" x 16.3"

**TV weight:** 69.4 lbs.

## Shipping dimensions (WxHxD)

**Carton:** 55.5" x 40.7" x 20.9"

**Carton weight:** 90.4 lbs.

## Order code

HLS5686WX/XAA

## UPC

036725256866

## Optional stand: (WXHXD) TR50X3B

**Net dimensions:** 50.6" x 17.7" x 17.4"

**Net weight:** 72.2 lbs.

**Shipping dimensions:** 52" x 7.5" x 19.6"

**Shipping weight:** 83.6 lbs.

**UPC:** 036725296015

**Order code:** TX50X3BX/XAA

<sup>1</sup>Feature dependent upon broadcasting of information by local off-air TV and cable channels.

Design and specifications are subject to change without notice. Non-metric weights and measurements are approximate.

DLP, and the DLP logo are registered trademarks or trademarks of Texas Instruments.

HDMI, the HDMI logo and High Definition Multimedia Interface are trademarks or registered trademarks of HDMI Licensing LLC.

SRS TruSurround XT is a registered trademark of SRS Labs, Inc.

DNLe™, Cinema Smooth™ and BrilliantColor™ are trademarks of Samsung Electronics Co., Ltd.

©2006 NFL Properties LLC. All NFL-related trademarks are trademarks of the National Football League.

©2006 Samsung Electronics America, Inc. All rights reserved Samsung is a registered trademark of Samsung Electronics Co., Ltd. All product and brand names are trademarks or registered trademarks of their respective companies. 406-SS Printed in USA.

For more information on digital TV technology please visit [www.samsung.com/dtvguide](http://www.samsung.com/dtvguide)