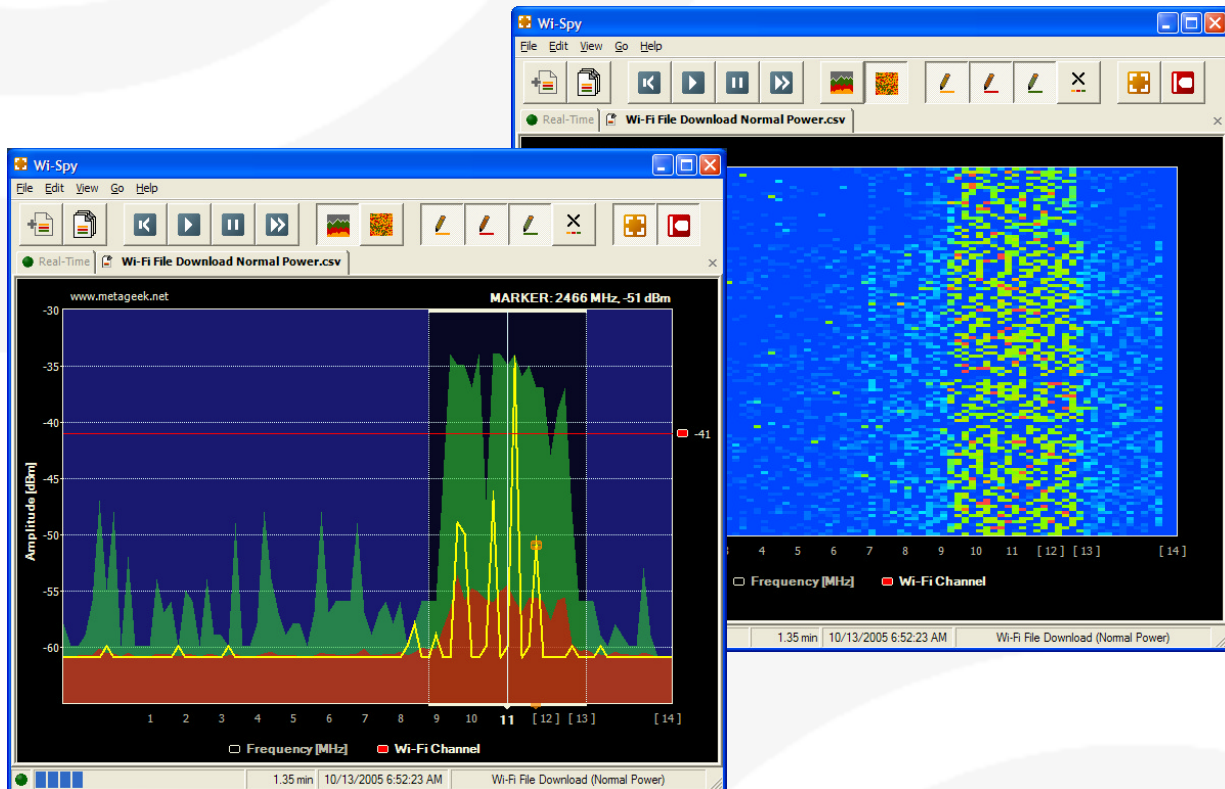


Wi-Spy™

Troubleshoot. Analyze. Optimize.

Wi-Spy shows you at a glance what Wi-Fi channels are quiet and what channels you should avoid if possible. This makes it easy to pick a quiet channel for your access point instead of picking your favorite number between 1 and 11. As the 2.4 GHz ISM Band becomes more popular (and more congested) interference from non-Wi-Fi devices can seriously degrade Wi-Fi performance. Wi-Spy helps you identify interference from cordless phones, microwaves, Bluetooth devices, baby monitors, and other 2.4 GHz devices, so that you can get the most out of your wireless network.



Features





- Data trace
- Average trace
- Maximum trace
- Frequency/amplitude marker
- High amplitude line
- Frequency/Wi-Fi channel view
- Save, print, or copy image to clipboard
- Record/playback data traces
- Tabbed interface
- Install to hard drive or run from CD
- Spectrogram View

System Requirements

- Windows 2000 or XP
- USB 1.1 or 2.0
- Microsoft .Net Framework 1.1 or higher
- 1024 x 768 screen resolution



Typical spectrum analyzers focus on features that enhance the accuracy of measurements, such as: sweep time, resolution bandwidth, and frequency range. These features require specialized hardware that adds considerable cost. Wi-Spy focuses instead on features that are beneficial for troubleshooting and analyzing wireless networks, such as saving and replaying traces, comparing traces, and displaying the wireless network channel boundaries. The following table shows a comparison of Wi-Spy with popular spectrum analyzers from three different categories: bench, mobile, and PC-based. Notice that Wi-Spy has a much smaller frequency range and slower sweep time than the other spectrum analyzers, but is only a fraction of the traditional spectrum analyzer cost while containing troubleshooting features that the other spectrum analyzers don't have.

	Agilent E4403B 	Rohde & Schwarz FSH3 Spectrum Analyzer 	Air Magnet Spectrum Analyzer 	Wi-Spy 
Frequency Range	9 KHz - 3 GHz	100 KHz - 3 GHz	2.4 - 2.5 GHz, 4.9 - 5.9 GHz	2.4 - 2.485 GHz
Weight	15.5 Kg (34.2 lb)	0.65 Kg (1.43 lb)	42.5 g (1.5 oz)	8.5 g (0.3 oz)
2.4 GHz Sweep Time	5 msec	N/A	N/A	96 msec
PC Interface	Floppy Disk, GPIB	RS-232	Cardbus	USB (1.1 or 2.0)
External Antenna	X	X		
External Trigger	X	X		
Save Image	X	X	X	X
Data Marker	X	X	X	X
Max Hold	X	X	X	X
Mobile Device		X	X	X
Spectrogram View			X	X
Export Data				X
Import Data				X
Price	\$12,456.00	\$6,990.00	\$3,995.00	\$99.00