

Instruction Sheet

SAH58 Horizontally Polarized Sector Antenna 5.4-5.9GHz Operation

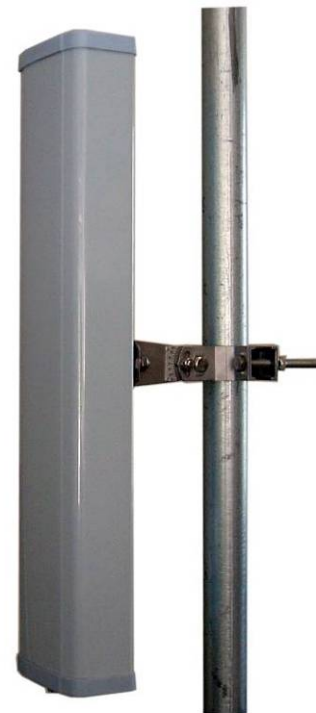
Step 1: Attach bracket to antenna using 2 bolts. Attach Antenna/Bracket to pole. Set the rotation and then tighten the pole clamp bolts.

Step 2: Set the downtilt or uptilt using the angle indicator and then tighten the holding bolts.

Step 3: Attach the cable to the integrated N Connector and waterproof the connection using self annealing waterproofing tape followed by a layer of electrical tape. Always start at the cable spiraling up toward the connector so that the tape overlap act like shingles to shed water.



Bracket with angle indicator



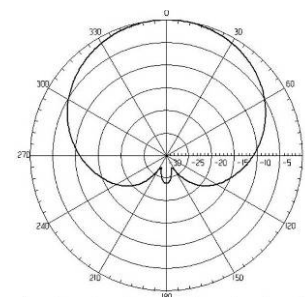
Specifications

Parameter	Min	Typ	Max	Units
<i>Frequency Range</i>	5400		5850	MHz
<i>VSWR</i>		1.5:1		
<i>Impedance</i>		50		OHM
<i>Input Power</i>			100	W
<i>Pole Diameter (OD)</i>	1.5" (38)		3" (76)	Inch (mm)
<i>Operating Temperature</i>	-40		+70	Deg C

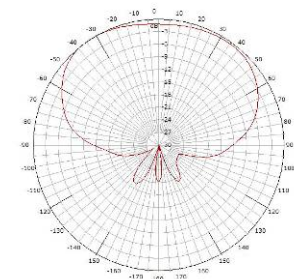
	SAH58-90-17-WB	SAH58-120-16-WB
<i>Gain (typical)</i>	17 dBi	16 dBi
<i>Horizontal Beam Width</i>	90 deg	120 deg
<i>Vertical Beam Width</i>	6 deg	6 deg
<i>Polarization</i>	Horizontal	Horizontal
<i>Front to Back</i>	>26 dB	>25 dB
<i>Mechanical Downtilt</i>	15 deg	15 deg
<i>Weight</i>	1.8 lb (0.8kg)	1.8 lb (0.8kg)
<i>Dimensions (LxWxH)</i>	22" x 5" x 2.8" (554 x 125 x 71mm)	22" x 5" x 2.8" (554 x 125 x 71mm)

Wind Loading			
Model	Sq. In	100MPH	125MPH
SAH58-WB	110	27.5 lb	43 lb

Antenna Patterns



SAH58-90-17 WB Azimuth



SAH58-120-16 WB Azimuth