

Wirelessly Connecting a Home Network via PePLink Surf 200BG-AP and 400BG-AP Integrated Home Wi-Fi Access Point Setup Guide

Overview

This guide presents a brief introduction of, and a step-by-step process to configure a basic setup for the Integrated Home Wi-Fi Access Point functionality of PePLink Surf 200/400BG-AP.

Prior to carrying out the setup procedure in this guide, the process of connecting PePLink Surf 200/400BG-AP with Citywide Wi-Fi must have been successfully performed.

The high-level steps are as follows:

1. Set up Integrated Home Wi-Fi Access Point on PePLink Surf 200/400BG-AP
2. Configure Wi-Fi enabled host PC(s)
3. Test the Wi-Fi connection(s) with PePLink Surf 200/400BG-AP



Integrated Home Wi-Fi Access Point – Introduction

The Integrated Home Wi-Fi Access Point functionality of PePLink Surf 200/400BG-AP allows 802.11b/g devices on customers' premises to wirelessly connect with a PePLink Surf 200/400BG-AP unit through which Citywide Wi-Fi is accessed.

With PePLink Surf 200/400BG-AP, the already existing Ethernet capabilities of the PePLink Surf Series remain unaffected.

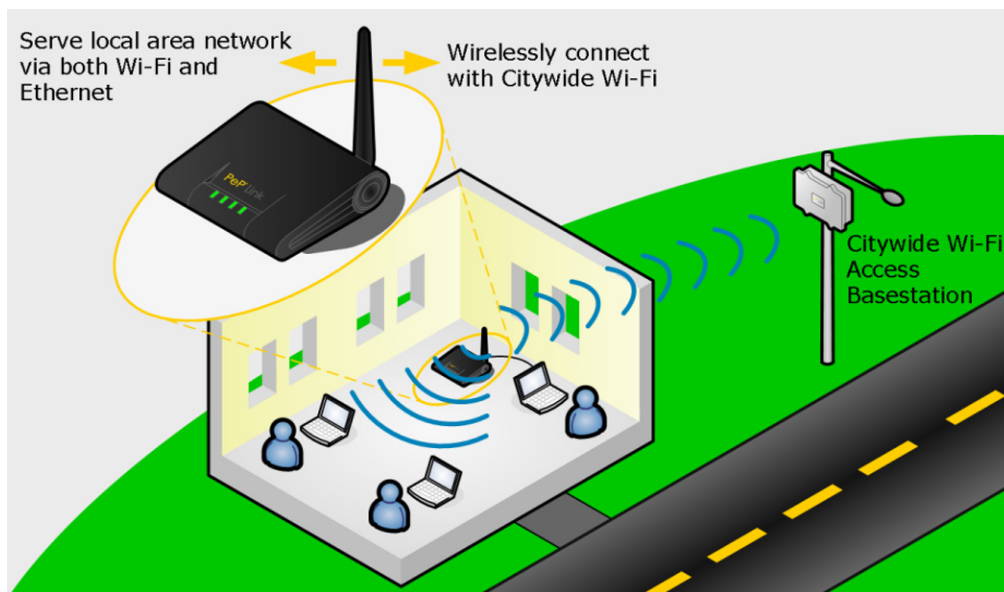


Figure 1 – PePLink Surf 200/400BG-AP and Integrated Home Wi-Fi Access Point

Important Note: Prerequisite Setup

In order to configure, and subsequently test, the Integrated Home Wi-Fi Access Point functionality of PePLink Surf 200/400BG-AP, connectivity between the PePLink Surf 200/400BG-AP unit and Citywide Wi-Fi must have already been established.

A guide through this “Prerequisite Setup” process to connect PePLink Surf 200/400BG-AP and Citywide Wi-Fi is available from the PePLink website, as follows:

Wi-Fi Connection Setup Guide – PePLink Surf How-to Document

http://download.peplink.com/pub/How-to/PePLink_Surf_howto_connection_setup_guide.pdf

Setup Procedure

Integrated Home Wi-Fi Access Point Configuration

From the configuration and connections performed in the Prerequisite Setup, the Web-based Configuration Interface of PePLink Surf 200/400BG-AP should remain accessible via a host PC connected via Ethernet to the PePLink Surf 200/400BG-AP unit.

Configure the Integrated Home Wi-Fi Access Point settings as follows:

1. Connect through a web-browser with the Web-based Configuration Interface of PePLink Surf 200/400BG-AP, via the URL `http://192.168.20.1`

Upon successfully connecting, the Welcome Screen is displayed.



Figure 2 – PePLink Surf Web-based Configuration Interface Welcome Screen

2. Click on **Advanced Config**. This loads the **CPE Setup** page, where the Wi-Fi settings are configured. (On the **CPE Setup** page, configuration parameters in the section **AP Settings** will need to be modified, whereas the other settings will remain at the values configured in the Prerequisite Setup.)

- In the section **AP Settings**, select the radio button labeled **Configure Manually**. Upon the selection, further configuration parameters are displayed.

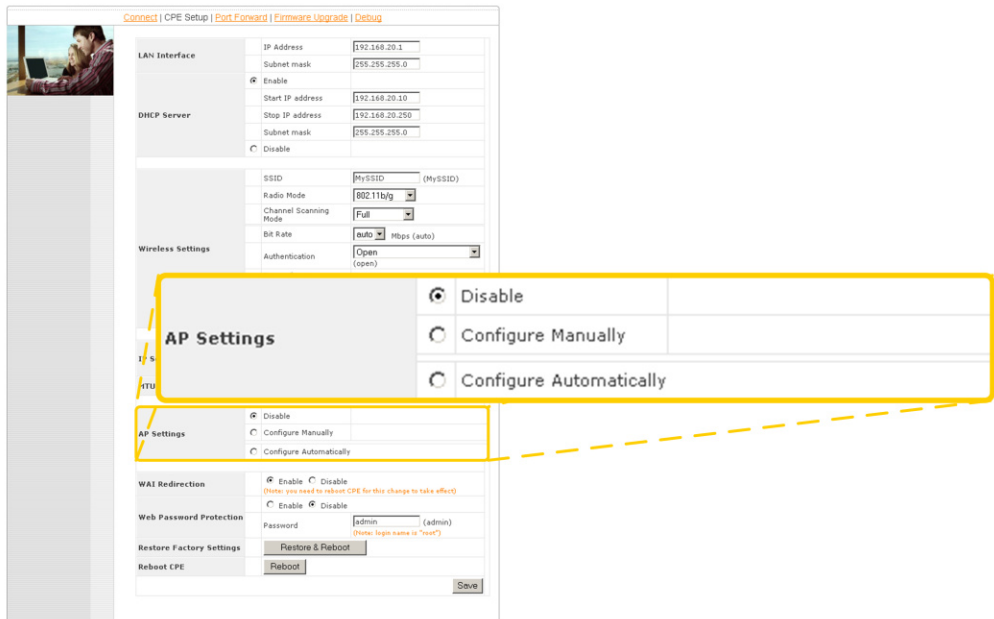


Figure 3 – The AP Settings section on the CPE Setup page

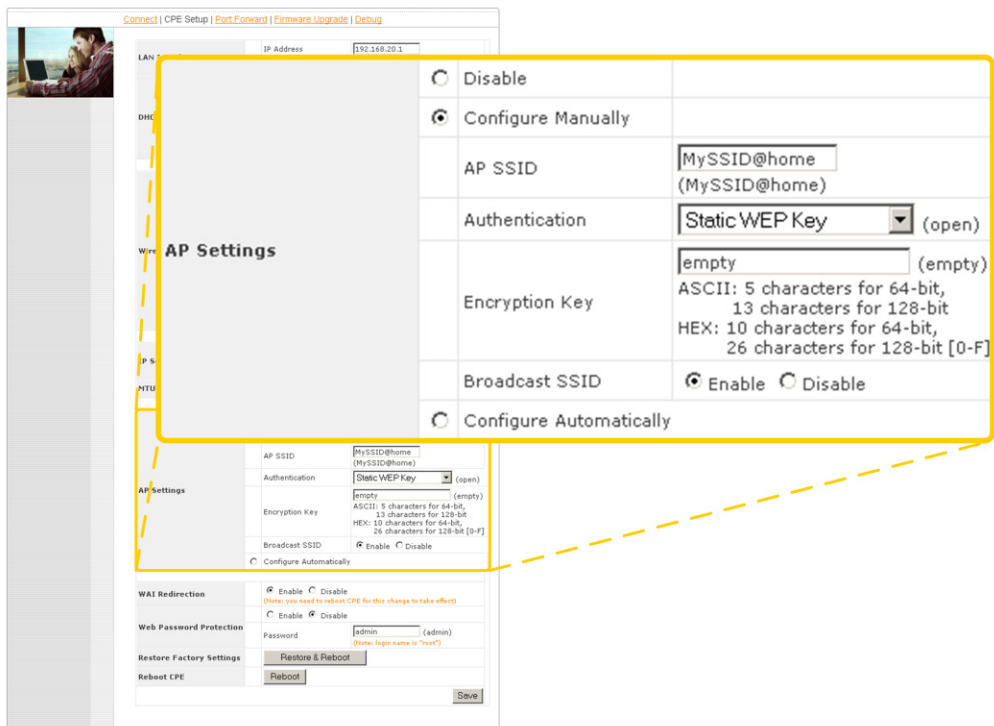


Figure 4 – Further configuration parameters are displayed upon the selection of the **Configure Manually** radio button.

4. In the **AP SSID** field, enter an alphanumeric value by which the home Wi-Fi network is to be identified. For illustration purposes, the default AP SSID value `MySSID@home` will be used throughout this guide.
5. Select **WPA/WPA-2-Personal** from the **Authentication** drop-down menu.
6. In the **Encryption Key** field, enter an alphanumeric value that is difficult to guess, and contains at least 8 characters. The same value as the one entered here will subsequently be used when configuring host PC(s) that connect with Integrated Home Wi-Fi Access Point of PePLink Surf 200/400BG-AP. For illustration purposes, the encryption key value `PePLinkSurfAP` will be used throughout this guide.
7. Click **Save** at the bottom-right corner of the **CPE Setup** page.

Configuration of Wi-Fi Enabled Host PC(s)

From a Wi-Fi enabled Windows XP host PC, connect with the Integrated Home Wi-Fi Access Point of PePLink Surf 200/400BG-AP as follows:

1. Make the following menu selections:
Start Menu > Control Panel > Network Connections
2. From **Network Connections**, right-click on the **Wireless Network Connection** icon, then select **View Available Wireless Networks**. The **Wireless Network Connection** window appears, as illustrated in **Figure 5**.

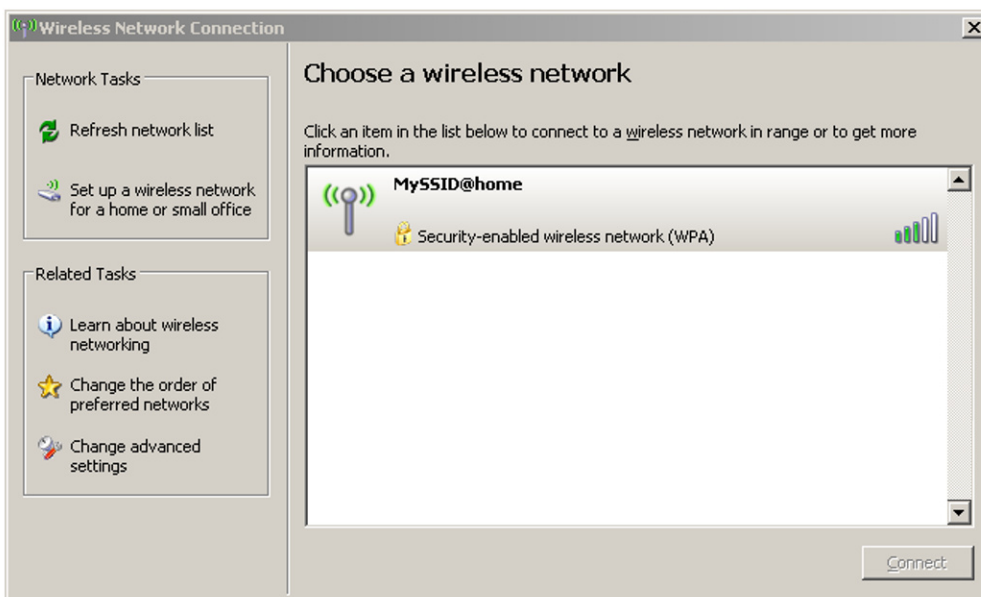


Figure 5 – Windows XP dialog box for connecting to a wireless network

An entry for **MySSID@home** should be present in the list of available wireless networks. If the entry is absent, click on **Refresh network list** on the left-hand side of the **Wireless Network Connection** window.

The entry for **MySSID@home** should be present afterwards.

3. Select the entry for **MySSID@home**.
4. Click **Connect** at the bottom-right corner of the **Wireless Network Connection** window. A dialog box then prompts for the Network Key.
5. In the **Network key** field, enter the value that was previously entered as the Encryption Key when configuring the AP Settings of PePLink Surf 200/400BG-AP. (The value `PePLinkSurfAP` was previously used in this guide for illustration.)
6. In the **Confirm key** field, enter the same value as in the previous step.
7. Click **Connect** at the bottom-right corner of the dialog box.

Testing the Wi-Fi Connection(s)

Test the Wi-Fi connection between the newly configured Wi-Fi enabled host PC and PePLink Surf 200/400BG-AP as follows:

1. Disconnect the Ethernet cable from the host PC.
2. Connect through a web-browser with the Web-based Configuration Interface of PePLink Surf 200/400BG-AP, via the URL `http://192.168.20.1`

Upon successfully connecting, the Welcome Screen is displayed.

After successfully testing the connection between the Wi-Fi enabled host PC and PePLink Surf 200/400BG-AP, test the connection with the Internet by visiting our website at www.peplink.com.

PePLink Technical Support

In the event that, after carrying out the setup procedure, the Integrated Home Wi-Fi Access Point component of PePLink Surf 200/400BG-AP fails to function, please browse the PePLink website at www.peplink.com for additional information, or contact PePLink Technical Support via email at support@peplink.com.