





SPYCOBRA

instruction manual

SpyCobra is an advanced hardware-software combination solution for monitoring Windows PCs.

Once the software is installed the SpyCobra monitoring tool can be removed and there are no signs that the computer is being monitored.

Disclaimer:

Please note that the SpyCobra device is not intended to be used for breaking into computer systems or for causing distress to users who are not aware they are being monitored.

Using the SpyCobra to record other people's keystrokes or to break into another person's computer or online accounts without his/her knowledge is an illegal activity in most countries and the SpyCobra should definitely not be used for these purposes.

It is intended for employers, authorised system administrators, and by the owner of the personal computer being monitored.

SpyCobra and its partners, the device's creator, and its employees assume no liability and are not responsible for any misuse or damage caused by the SpyCobra monitoring tool.

Users take responsibility for obeying all effective laws in their own country.

IMPORTANT NOTE: It is strongly recommended that you write down the device's serial number somewhere safe. This will be required if you need to contact technical support. To find out the serial number, open the Spy Cobra's admin panel and press F1. This will display the 20 digit serial number.



Distributed by Thumbs Up (UK) Ltd, Ruislip, Middlesex, HA4 0EJ, UK
www.thumbsupuk.com

Any time you want to see what web sites your kids or employees are visiting or who and what they are chatting about, simply plug in your SpyCobra into a USB port.

You can monitor both sides of IM conversations or tell the SpyCobra to display all recent activity. It is also possible to check the sender and recipient of every email sent or received.

You can also capture screenshots at regular intervals or choose trigger words, which when typed will initiate a screen shot being taken so that you can see exactly what the users are doing.

There are no special keystrokes or passwords to remember, just plug it in and it will launch and install itself.

To use:

Simply insert the SpyCobra device into a USB port on the computer you want to monitor.

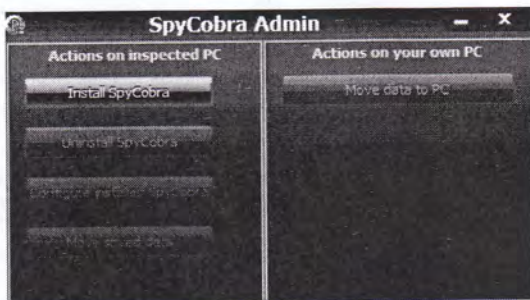
A window will then appear with the SpyCobra software in it.

Click on the 'SpyCobra' icon.

IMPORTANT: For the SpyCobra to work the Admin panel must be used with the system administrator account, as guests limited account may not allow for full installation.

Under Windows Vista you should run the SpyCobra administrator panel by right clicking the SpyCobra icon and selecting the 'Run As' option and selecting an administrator's account.

You will then see:



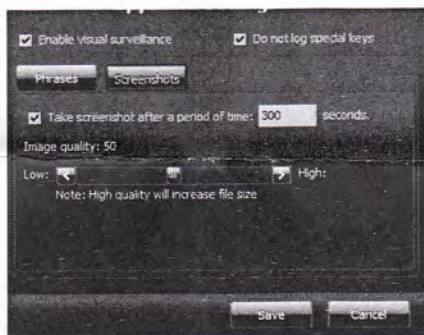
Click 'install SpyCobra'. It will quickly install the monitoring software. This will be undetectable in normal use.

You can then select 'Configure installed SpyCobra' to set up the SpyCobra and select how often you want it to take screenshots, or select words to trigger screenshots being taken.

The 'Phrase' setting allows you to set the SpyCobra to take a screenshot when specific words or phrase are entered by the user. When a user enters any of these words or phrases that you specify here an automatic desktop screenshot will be saved to the log folder.

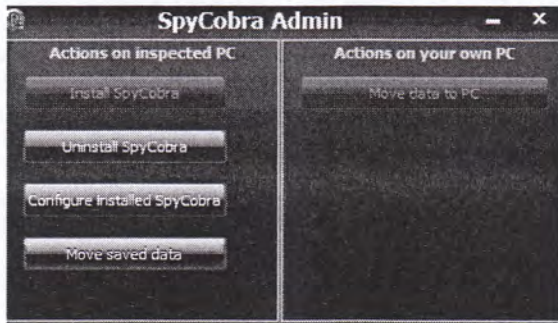
Alternatively you can specify how often a desktop screenshot will be made. The time interval is indicated in seconds. The minimum value is 30 seconds and the default setting for screenshot time interval is every 600 seconds.

In addition, you can specify the image quality of the desktop screenshot. Lower quality will generate small files, and high quality will generate larger files.



When the software is installed and you have configured the screenshot settings, simply remove the SpyCobra and take it away with you.

When you will want to access the data that has been captured simply plug again and run the SpyCobra software by clicking on the icon. When the administrator panel appears click 'move saved data' button and within a few seconds it will save screenshots and captured data to the SpyCobra unit.



Now you can unplug the SpyCobra and access this data from any computer by plugging it into a USB port and clicking the 'Move data to PC' button.

This will allow you to choose the location where you want to save the logged files. Select this and then click ok.

The Spycobra will then create a folders named SAVEDATA at this location and inside this there will be two subfolders KEYS and SCREENS.

In KEYS folder you can view the key log.

Log filenames are saved in the format (loggedusername_dateandtime)

In the SCREENS folder you will be able to view screenshots that are taken during use.

Additionally you can configure these option by clicking 'Configure installed SpyCobra'

Technical support:

After running the SpyCobra application you can press the F1 key to see the device serial number and contact information.

Email Support - support@spycobra.com

Important Note

One SpyCobra can be used on any computer at any time. Each SpyCobra is unique and has its own encryption, so the same unit is required to access captured logs and screenshots.

Windows, and Windows Vista are trademarks of Microsoft Corporation, registered in the United States and other countries. Other names may be trademarks of their respective owners.