

Aluminum Boxes - Data Distribution System

DATA DISTRIBUTION SYSTEM PRIVATE ACCESS

Salsbury 2400 series data distribution system aluminum boxes have 1/4" thick extruded aluminum doors with a durable powder coated silver finish. Each door includes a 3/4" H door slot, a five (5) pin cylinder cam lock with two (2) keys and is hinged horizontally at the bottom. Alternative locking systems are available - see page 19 for options. Doors are available without slots upon request. The compartments have open backs (rear covers #2451 are available as an option upon request) and are constructed of 20 gauge steel. All units have the same outside dimensions. Data distribution system boxes are designed to be installed between rack ladders (#2400). The rack ladders support five (5) units to form a column of boxes. Data distribution system boxes can also be used in Free-Standing Mail Centers (see pages 24 and 25).



2406



Combination locks (#2486) are available as an option upon request (available only on units without slots)

DATA DISTRIBUTION SYSTEM

MODEL	DESC.	DOOR SIZE	WEIGHT	PRICE
2406	6 Doors	11" W x 3-1/2" H slots 9" W x 3/4" H	40 lbs.	\$220.00
2404	4 Doors	11" W x 5-1/2" H slots 9" W x 3/4" H	35 lbs.	\$200.00
2402	2 Doors	22" W x 5-1/2" H slots 19-1/2" W x 3/4" H	35 lbs.	\$190.00
2401	1 Door	22" W x 11-1/2" H slot 19-1/2" W x 3/4" H	35 lbs.	\$180.00
2400	Rack Ladder	61-7/8" H x 15-1/2" D	25 lbs.	\$70.00
2400C	Rack Ladder - custom - specify 2, 3, 4 or 6 high			\$90.00
UNIT SIZE		23-1/4" W x 12-1/8" H x 15-1/2" D		
2486	Lock - combination for each 2400 series door (on units w/out slots only)			\$8.00
2490	Lock - standard replacement for 2400 series doors - with (2) keys			\$5.00
2499	Key blanks - for standard 2400 series lock - box of (50)			\$25.00

Data distribution system aluminum boxes

phone 1-888-863-1040 www.communitymailboxes.com fax 1-707-265-0206





2404

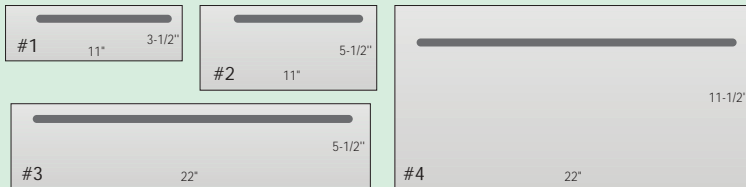


2402



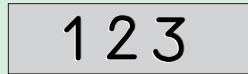
2401

2400 Series Data Distribution System Door Sizes



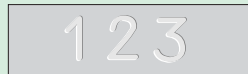
Custom Engraved Placards

3" W x 7/8" H custom engraved self-adhesive placards are available as an option upon request. (#2467 - \$3.00)



Custom Door Engraving

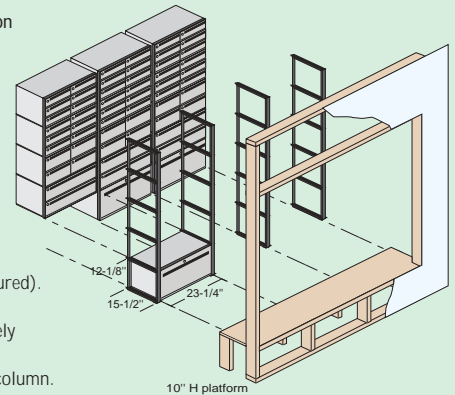
Custom door engraving is available as an option upon request. (#2468 - \$3.00)



Sample Installation

Models displayed:

- (6) 2406's
- (3) 2404's
- (3) 2402's
- (3) 2401's
- (4) 2400's



Units are secured from the rear by brackets (not pictured).

Allow approximately 24" W and 62" H for each mailbox column.

One column of data distribution boxes requires two (2) rack ladders and each additional column in the same configuration requires one additional rack ladder.

ALUMINUM MAILBOX OPTIONS - FOR STANDARD, RACK LADDER AND DATA DISTRIBUTION SYSTEMS

OPTIONS

- Custom sized units - call for pricing
- Custom rack ladders for varied column heights (specify 2, 3, 4 or 6 high columns) (#2200C / #2400C - \$90.00)
- Rear covers
 - locking on standard system units (#2250 - \$50.00)
 - hasp on rack ladder system columns (#2251 - \$100.00)
 - hasp on data distribution system columns (#2451 - \$100.00)
- Trim - black snap-on peripheral trim 1-1/2" W x 3/8" D for up to three (3) columns of mailboxes or data distribution boxes (#2213 / #2413 - \$80.00)
- Plexiglass window (#2271 / #2471 - \$3.00)
- Mail slots (#2269 - \$3.00)

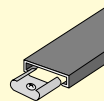
Standard mail slot sizes for 2200 series:

- #1 Door - 2-1/2" W x 3/4" H
- #2 Door - 4" W x 3/4" H
- #3 Door - 9" W x 3/4" H
- #4 Door - 9" W x 3/4" H
- #5 Door - 9" W x 3/4" H (on left side)



Custom slot sizes are available upon request.

- Custom door finish as specified (#2264 / #2464 add 10% to unit price)
- Custom engraving
 - engraved placards (#2267 / #2467 - \$3.00)
 - engraved door (#2268 / #2468 - \$3.00)
- Self-adhesive numbers - sheets of (100) (#2295 / #2495 - \$15.00)
- Label holders - (50) 3" x 3/8" (#1070 - \$30.00)



#2213 / #2413 Trim \$80.00



#2271 / #2471 Plexiglass window 7/8" W x 1-1/4" H \$3.00



#2268 Sample door engraving \$3.00

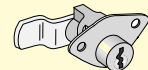
DOOR AND COMPARTMENT IDENTIFICATION

Self-adhesive numbers (1-3000 available) are supplied upon request with a standard order. Custom identification systems are available as an option upon request. Label Holders (#1070 - \$30.00 - page 63) neatly organize and identify the rear of the mailbox compartments and are available as an option upon request.

LOCKS

Each mailbox and data distribution door includes a five (5) pin cylinder cam lock with two (2) keys (1,000 different key changes).

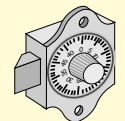
- Lock - for 2200 and 2400 series (#2290 / #2490 - \$5.00)
- Three (3) digit single dial combination lock with spring latch and automatic throw-off (#2286 / #2486 - \$8.00) (combination numbers can be changed by owner)
- Thumb latch - in lieu of standard lock (#2289 / #2489 - \$3.00)
- Upgraded lock for 2200 series with (3) keys (#2290U - \$9.00)
- Spring latch lock with two (2) keys - not pictured (#2287 - \$9.00)
- Custom lock installation - most styles accommodated cylinder provided by owner - 100 door minimum (#2293 - \$3.00)
- Key blanks - box of (50) - for 2200 series (#2299 - \$25.00)
- Key blanks - box of (50) - for 2400 series (#2499 - \$25.00)
- Key blanks - box of (50) - for #2290U (#2299U - \$30.00)



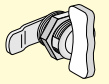
#2290 Lock for 2200 series \$5.00



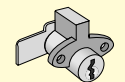
#2490 Lock for 2400 series \$5.00



#2286 / #2486 Combination lock \$8.00



#2289 / #2489 Thumb latch \$3.00



#2290U Upgraded lock for 2200 series \$9.00



#2298 / #2498 Additional keys for #2290 and #2490 \$2.00 per key