



**MODERN HOME PRODUCTS**

From The People That Pioneered Gas BBQ Grills & Gas Yard Lamps

iBuyFireplaceParts.com 888-634-4289

# MODELS GAS LAMPS, PARTS, INSTALLATION AND MAINTENANCE

HK, GG, HJ & TK

## \* SPECIAL NOTE

Lamps are set for 7" W.C. pressure on natural gas & 11" W.C. pressure for L.P. gas.

### FOR YOUR SAFETY

If you smell gas:

1. Shut off gas to the appliance.
2. Extinguish any open flame.
3. If odor continues, immediately call your gas supplier.

### FOR YOUR SAFETY

Do not place combustible materials near this appliance.  
Do not store or use gasoline or other flammable vapors and liquids in the vicinity of this or any other appliance.

### FOR YOUR SAFETY

The installation of this gas lamp must conform with all local codes or, in the absence of local codes, with the latest edition of the National Fuel Gas Code, ANSI Z21.42-b-1981

THESE INSTRUCTIONS SHOULD BE LEFT WITH THE CONSUMER.  
KEEP THESE INSTRUCTIONS FOR FUTURE REFERENCE.

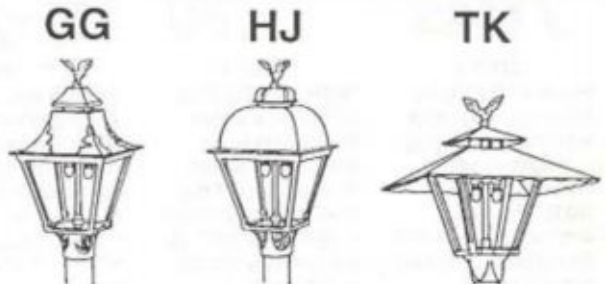


	HK	GG	HJ	TK	
1	HKA-1	HKA-1	HKA-1	HKA-1	Solid brass eagle
	HKA-1A	HKA-1A	HKA-1A	HKA-1A	Brass plated eagle
	HKA-2	GGA-2	HJA-2	TKA-2	Lamp cap
3	LSU	LSU	LSU	LSU	Upper lamp screen bronze 4-3/8" dia.
4					Washer
5	1-3/4	1-5/8	1-3/4	1-5/8	Screw for cap and eagle 10-24
6	DIB	DIB	DIB	DIB	Burner head
7	BT-1	BT-1	BT-1	BT-1	Ceramic burner tip
8	MTL-2	MTL-2	MTL-2	MTL-2	Soft mantle-No. 2 ring size
9	ALS	ALS	ALS	ALS	Aluminum lamp tube
10	LSL	LSL	LSL	LSL	Lower lamp screen-Aluminum 3-5/8"X4-5/8"
11	ORF	ORF	ORF	ORF	Lamp valve orifice (specify LP. or NAT.)
12	GLV	GLV	GLV	GLV	Lamp valve
13	GLS	GLS	GLS	GLS	Lamp glass (four (4) needed)
14*	DMI	DMI	DMI	DMI	Complete lamp burner kit. **
15	CHM	CHM	CHM	CHM	Glass chimney
16	MTL-3	MTL-3	MTL-3	MTL-3	Upright mantle
17*	UBA	UBA	UBA	UBA	Upright burner assembly



**Model HK**

**IMPORTANT**  
When ordering Parts specify lamp Model, (AL. or Brass) type of Gas (LP. or Nat) also black or white.



iBuyFireplaceParts.com 888-634-4289

All lamps are available with inverted and upright burner.  
GG - Post mount, wall or pedestal mount (aluminum or brass).  
TK - Post mount or pedestal mount only (aluminum only).

\*Replacement parts may be obtained through an authorized distributor. Please call or write for the name, address and phone number of the distributor near you.

## POST & TUBING INFORMATION

Proper post and tubing selection is essential. Your local gas company or an authorized MHP Distributor can supply these parts. Use only copper tubing that has been internally tinned is recommended. 1/4" flare nuts should be used on both ends.

**NOTE: The lamp is for outdoor installation only and must be installed at least 12" in any direction from any combustible materials.**

### POST INSTALLATION

1. Dig a hole in the ground approximately 12" wide by 24" deep.
2. Set the bottom of the post in the center of the hole. Brace the post in a plumb position and pour concrete around the post to just below the level of the gas line access hole.

### INSTALL LAMP ON POST

1. If not already furnished, place tubing in post. Tubing should have at least two coils at the top of the post.
2. Connect gas supply line to tubing at the base of the post and tighten flare nuts clockwise. No sealants are necessary.



3. Perform any remaining assembly to the lamp but do not install glass.
- Remove contents from burner kit box.
- Install finial to rain cap.
- Attach valve to gas supply tubing and tighten flare nut clockwise. Be sure the fittings are tight.
4. Slowly lower the lamp onto the post, guiding the valve up through the center hole in the bottom of the lamp. Take care not to bend or crimp the tubing.
5. Align slot in the top of the post with the access hole in the collar. Align valve stem with the access hole and tighten the lock screw in the collar of the lamp to secure the lamp to the post.
6. Thread the burner tube onto the valve. Keep the valve from turning by inserting a screwdriver through the access hole.
7. Be certain the lamp valve is in the off position before turning on the gas supply.
8. Leaving lamp valve in off position, turn on main gas supply and check all connections for leaks using a soapy solution. Tighten any leaky joints and recheck for leaks.

## LIGHTING INSTRUCTIONS INVERTED BURNER

### - CAUTION-

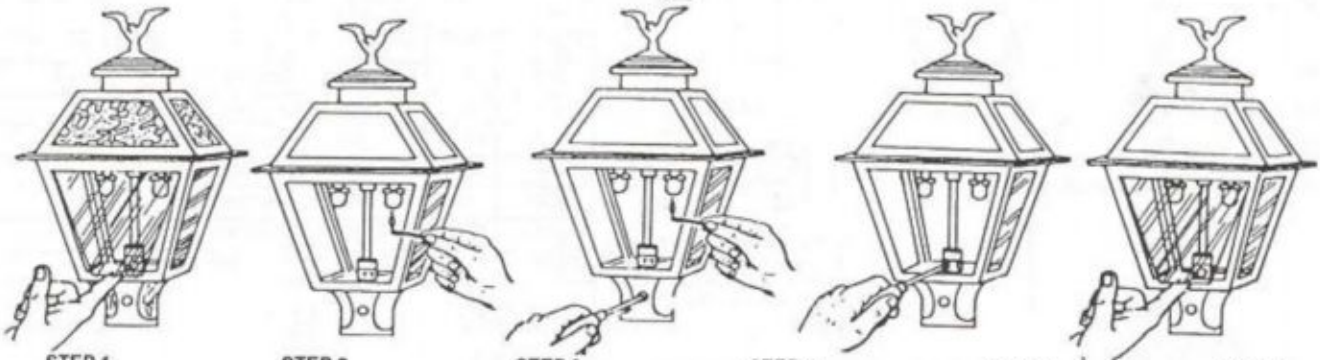
Turn gas supply off and wait for lamp to cool before starting any repairs. Remove and clean glass when necessary. Replace broken mantles. Refer to steps 1-6 of instructions

**IMPORTANT:** Gas mantles are very delicate and should not be handled roughly.

- A. Remove new mantle from the container without touching the cloth portion. Hang the mantle on the burner tip, rotating it to fit into the slots on the burner tip.
- B. Nothing should touch the cloth portion, so when lighting, do not touch the match to the mantle itself. (Pull down only on a soft mantle to shape it.



- C. If a mantle should become damaged, additional mantles may be obtained through your local gas company, gas appliance hardware store. Always replace both mantles at the same time. Mantles are Modern Home Products' Part No. MTL-2, No. 2 ring size. These are soft mantles requiring shaping.
- D. Refer to steps 1-6 for proper lighting procedure.
- E. To clean the glass panels of your lamp, turn the gas off with a screwdriver through the access hole in the lower collar of the lamp. Allow the lamp to cool, remove the glass and wash it. Glass panels may be placed in a dishwasher.



STEP 1

Remove the glass by lifting from the bottom with forefinger, pulling out slightly, and lowering.  
**NOTE:** Proper combustion is essential. Do not obstruct air inlet or outlet vents.

STEP 2

**WITH GAS TURNED OFF,** hold a lighted match up to but not touching the mantle. This will burn off the protective coating (and it will flash slightly). Do not touch the mantle with the match.

STEP 3

After the mantles have stopped burning, use a screwdriver to slowly turn the gas ON and hold another match up to, but not touching, the mantles to light them. When lit, turn the gas on full.

STEP 4

Your Modern Home lamp is factory set to burn at its most efficient point. However, this adjustment may be changed during shipment. To adjust this, raise or lower the air shutter until the mantles are burning their brightest.

STEP 5

If flame extends above the ceramic mantle ring, turn off lamp valve and contact your local gas company or authorized MHP distributor.  
**NOTE:** Proper combustion is essential. Do not obstruct air inlet or outlet vents.

STEP 6

Replace the glass by fitting the top edge into the frame top, holding the glass against the tabs inside the frame. Allow the glass to settle into frame bottom.