

GR-Series Coffee Grinders

the ultimate in grinder technology—provide fast, medium to large volume, precision ground coffee you can depend on.

FETCO GR Series Coffee Grinders are designed to meet individual requirements with a host of advanced features to provide consistency, choice and style.

- Electronic circuit controls ensure volume accuracy
- Heavy gauge body construction
- Push-button controls provide easy training and operation
- Easily adjustable grind settings from fine to coarse
- Precision and uniform grind profile
- Cool running motor prevents coffee beans from re-heating
- 1 to 3 pounds per minute throughput
- 6 to 20 pounds hopper
- All units are UL-listed



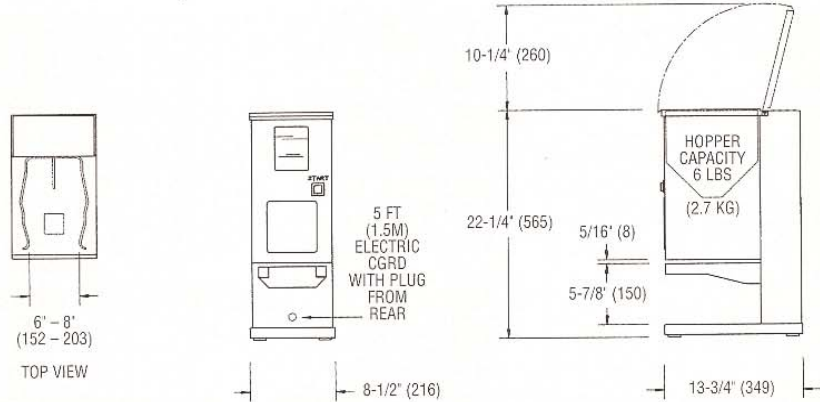
GR SERIES

GR-1 SINGLE HOPPER PORTION CONTROL COFFEE GRINDER

STANDARD FEATURES

- Fully Automatic Operation
- Vertically Built-in Grinding Discs
- 6 lbs Hopper Capacity
- Solid State Timer
- Consistent Grind Setting
- Large Grinding Burrs
- Self Adjusting Brew Basket Rails
- Powerful 0.67Hp Motor
- Circuit Breaker Provided

Dimensions & Specifications

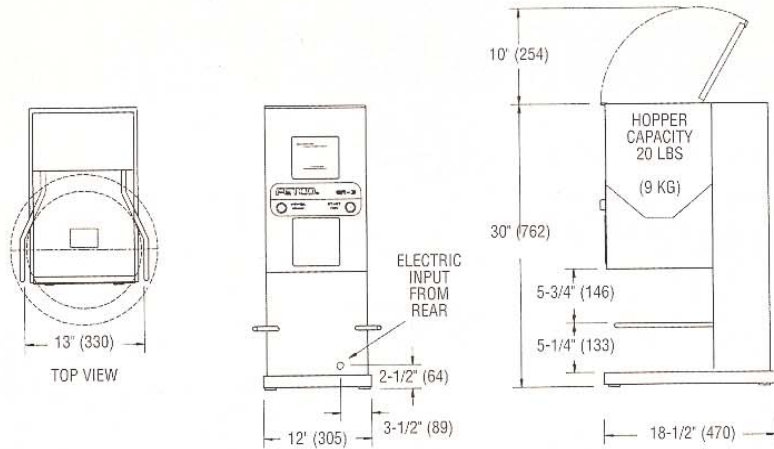


MODEL	HEIGHT in/mm	WIDTH in/mm	DEPTH in/mm	HOPPER CAPACITY lbs/kg	BURR SIZE DIA. in/mm	MOTOR	PORTION RANGE oz/g	TIMER RANGE sec	SETTING FINE lbs/kg per min	SETTING MEDIUM lbs/kg per min	SETTING COARSE lbs/kg per min	WEIGHT SHIP lbs/kg	CUBIC FEET cu.ft/cu.dec.
GR-1	22 1/4 565	8 1/2 216	13 3/4 349	6 2.7	2.52 64	110/60/1	2.4 TO 16 68 TO 454	10 to 60	.88 400	.92 420	1.0 450	47 21.5	3.8 107

GR-3 SINGLE HOPPER PORTION CONTROL COFFEE GRINDER

STANDARD FEATURES

- Fully Automatic Operation
- Vertically Built-in Grinding Discs
- 20 lbs Hopper Capacity
- Solid State Timer
- Consistent Grind Setting
- Large Grinding Burrs
- Brew Basket Rails Provided
- Powerful 1.47Hp Motor
- Circuit Breaker Provided



MODEL	HEIGHT in/mm	WIDTH in/mm	DEPTH in/mm	HOPPER CAPACITY lbs/kg	BURR SIZE DIA. in/mm	MOTOR	PORTION RANGE oz/g	TIMER RANGE sec	SETTING FINE lbs/kg per min	SETTING MEDIUM lbs/kg per min	SETTING COARSE lbs/kg per min	WEIGHT SHIP lbs/kg	CUBIC FEET cu.ft/cu.dec.
GR-3	30 762	12 305	18 1/2 470	20 9	3.54 90	220/60/3	4.8 TO 92.8 136 TO 2.631	10 to 120	2.2 1.0	2.6 1.2	2.9 1.3	95 42.75	7.2 204



FETCO Corporation is a proud and active member of these organizations:



FETCO
CORPORATION

Food Equipment Technologies Company, Inc.
640 Heathrow Drive, Lincolnshire, IL 60069 USA
Phone: 847.821.1177 800-FETCO 99 Fax: 847.821.1178
Internet: www.fetco.com E-mail: sales@fetco.com